

STAND CONSTANT FOR  
EXHIBITION CONSTRUCTION

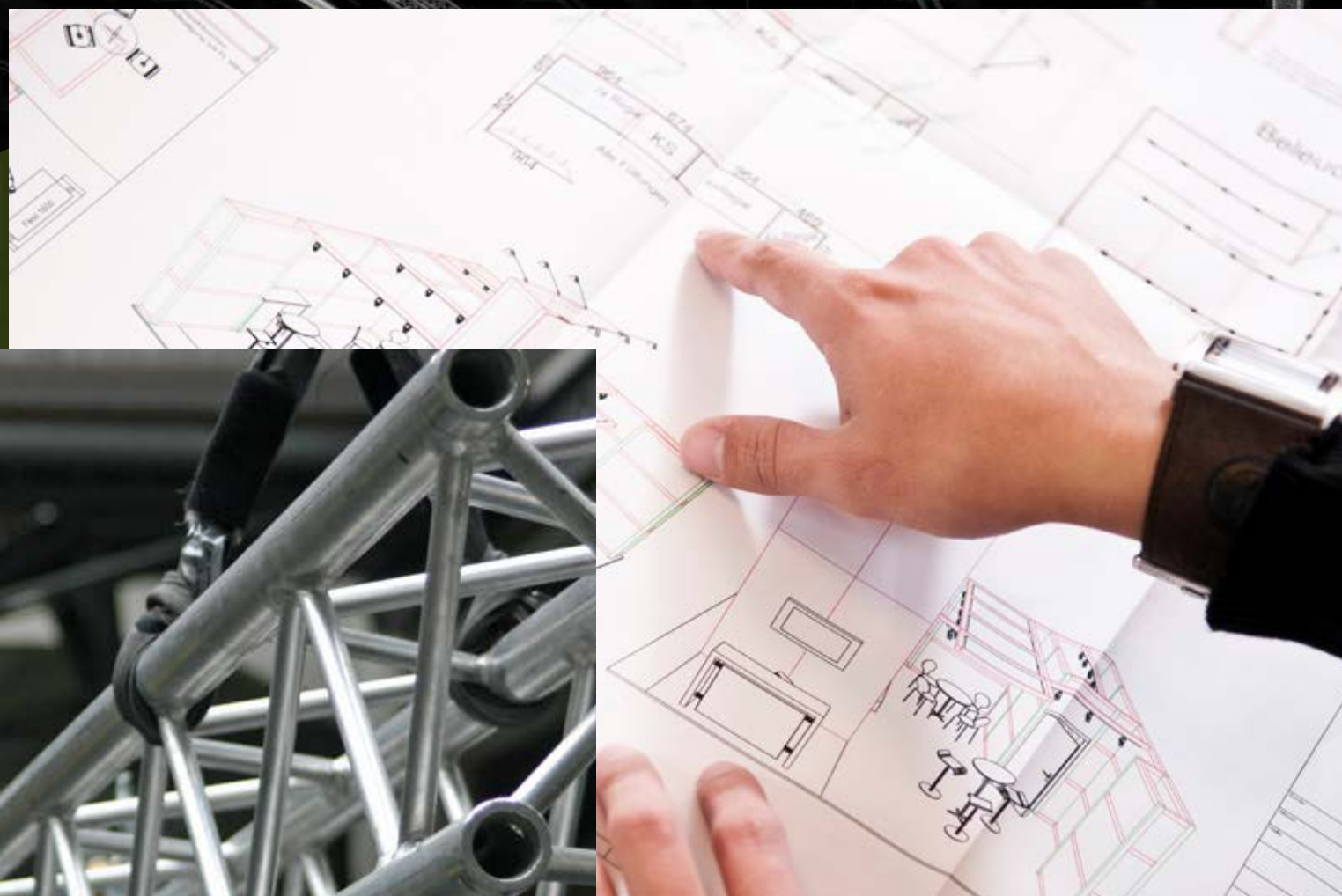


MECCERATI  
**roc**  
**Design.**





**GERMAN  
DESIGN  
AWARD  
WINNER  
2026**



EXHIBITION STAND CONSTRUCTION

**Personal.  
Fast.  
Reliable.**

In times of a fully digitalized world, the personal contact often gets lost. Even today the best deals are concluded by a simple handshake after a face-to-face conversation in a representative environment.

We made it our business to individually and exceptionally create temporary architecture for you. A first-class trained team of designers, carpenters, and mechanics delivers solid high-class workmanship. There are no boundaries for us when it comes to quality, precision, and design



**RELIABLE. GLOBAL. PERSONAL. FAST. SUSTAINABLE.  
CUSTOMER-ORIENTED. EFFICIENT. FLEXIBEL. INNOVATIVE.  
COMPETENT. CREATIVE. TRANSPARENT. UPSCALE.**



WHY **ROC**

**We conceptualize, design  
and produce high-quality  
exhibition stands which  
are **convincing** worldwide.**

rocDesign. convinces customers worldwide not only through upscale and creative exhibition stands but also through personal and honest customer relations, reliable cooperation, fast and efficient working methods and a very high standard of quality.

More than 28 years of experience, over 61.500 built sqm per year, projects in more than 22 countries, over 500 innovative projects, and more than 80 satisfied customers make us your competent partner.

**GERMANY. AMERICA. SPAIN. MEXICO. ITALY.  
BRAZIL. FRANCE. NORWAY. ENGLAND. CANADA.  
POLAND. DENMARK. CZECH REPUBLIC. HUNGARY.**

**roc in figures.**

**697.536<sup>+</sup> 22<sup>+</sup>**

BUILT SQM

COUNTRIES

**2000<sup>+</sup> 80<sup>+</sup>**

INNOVATIVE PROJECTS

SATISFIED CUSTOMERS



WORKFLOW

# Our Workflow. For your success.

01

## First Consultation

Discuss customer goals, requests, and visions in order to get a clear vision of the project.

02

## Concept Development

Develop ideas and combine them into a well-thought-out concept.

03

## Proposal Phase

Present and as the case may be optimize a concept-based, transparent proposal.

04

## Rendering

Creation of a detailed visualization for a realistic impression of the booth.

05

## Production

Material procurement, component production, and manufacturing according to the concept specifications.

06

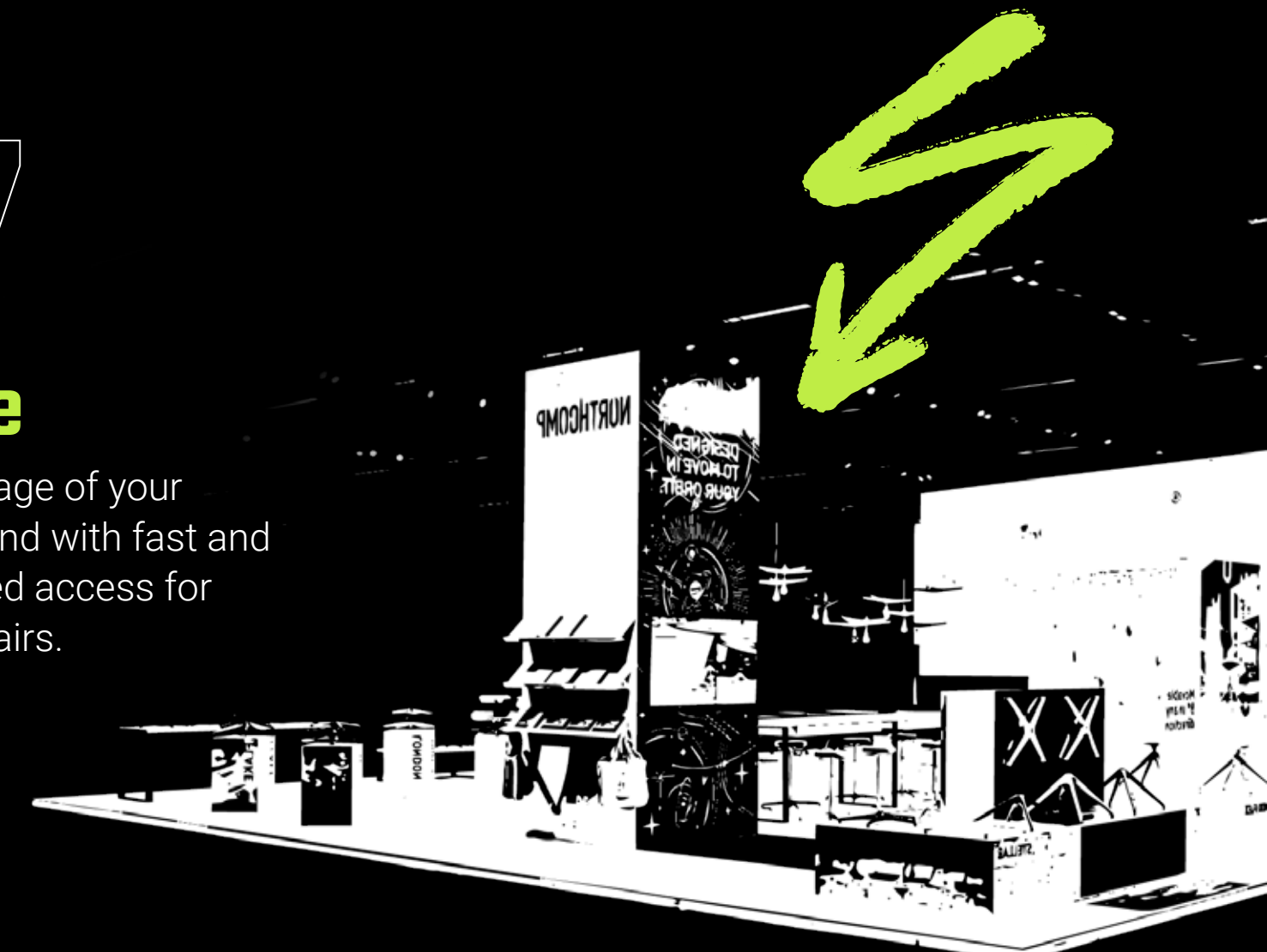
## Assembly

Fast and reliable assembly of the booth worldwide.

07

## Storage

Carefree storage of your exhibition stand with fast and uncomplicated access for future trade fairs.





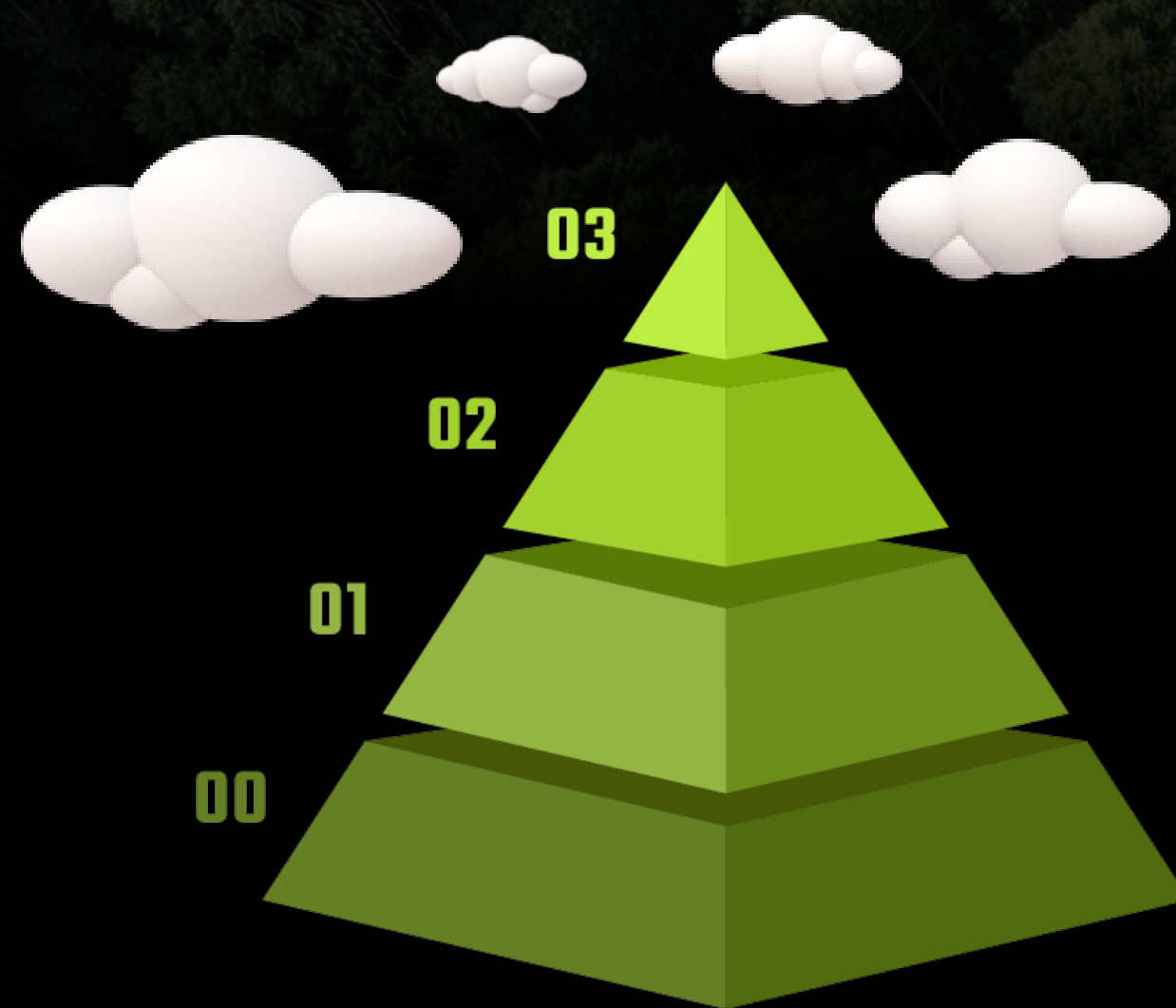
# Sustainability as Business Philosophy.

In our projects we have a reuse quota of approximately 88% and rely on resource efficiency in our entire process chain. For us state-of-the-art technology in heating, machines, EDP, and the vehicle fleet is a given. We also rely on sustainability and ecologically produced products and sustainable processes respectively when it comes to our suppliers.



## Your exhibition stand needs to be particularly sustainable?

We make it our business to design our exhibition stands as sustainable as possible. For a simplified display we created a self-explanatory pyramid, which shows the individual steps up to a Co2 neutral exhibition stand.



STUFE 01

**Sustainability Standard**

STUFE 02

**Sustainability PLUS**

STUFE 03

**Sustainability PREMIUM**





- Essen Motor Show 2025

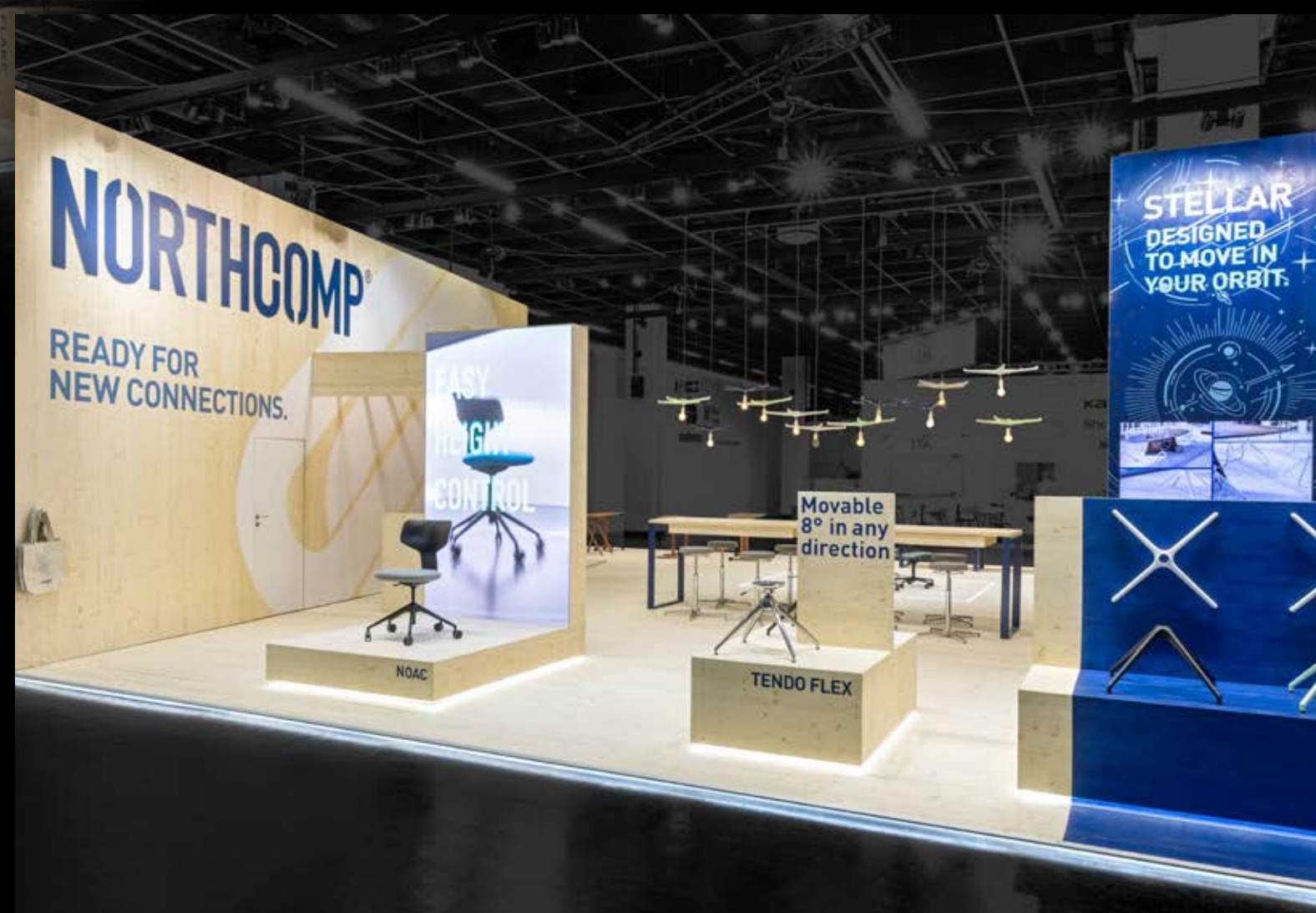






**NORTHCOMP®**

**- Interzum 2025**







- E-WORLD 2024





- IAA Transportation 2024

realisiert mit:  
ANTE+  
STAEHEL

MESSBAU  
roc  
Design.





- Electronica 2024





- Nürnberg 2025







- 112 Rescue 2024

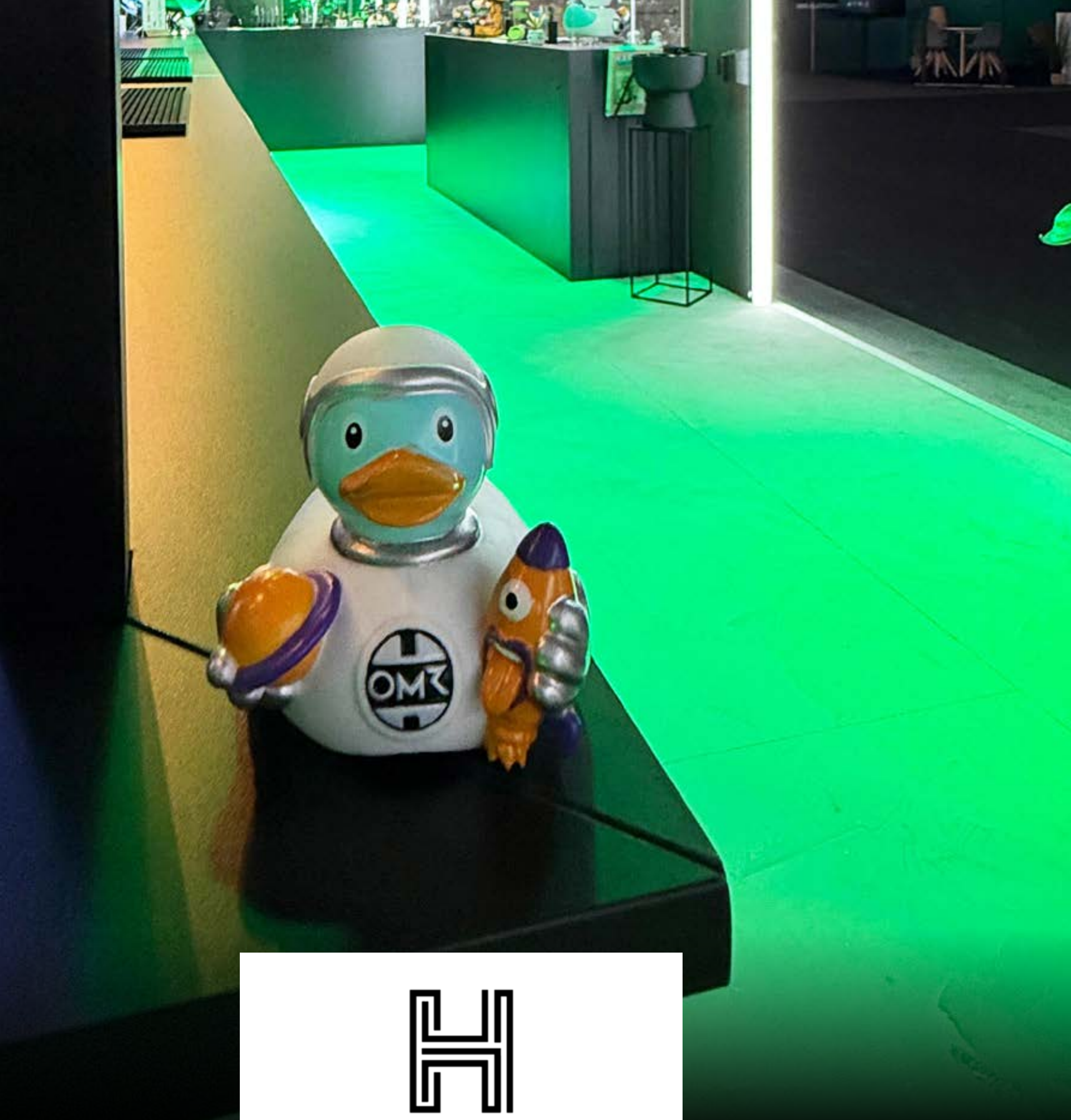




**ANTE+  
STAEHELY**

**roc**  
**Design.**

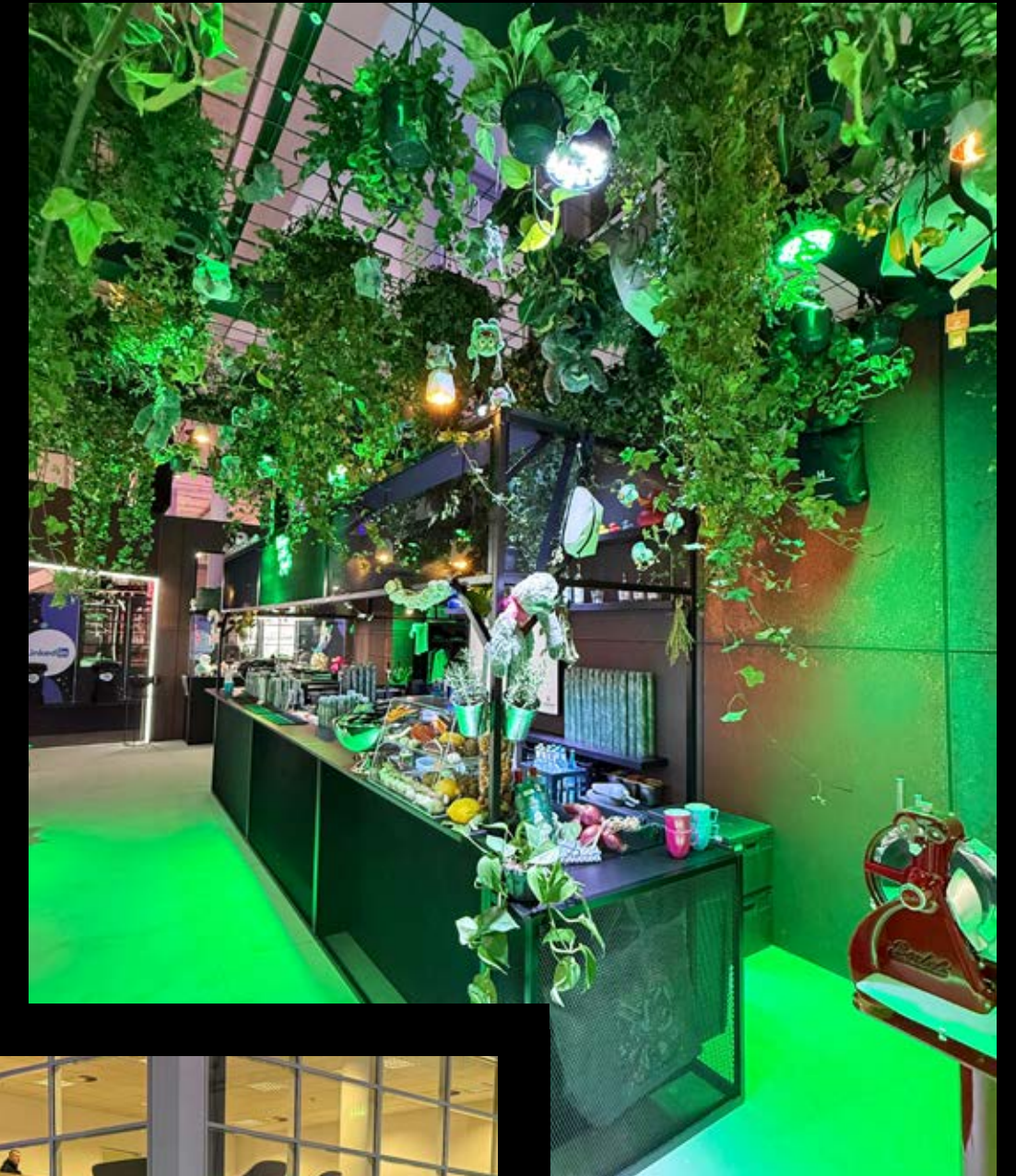
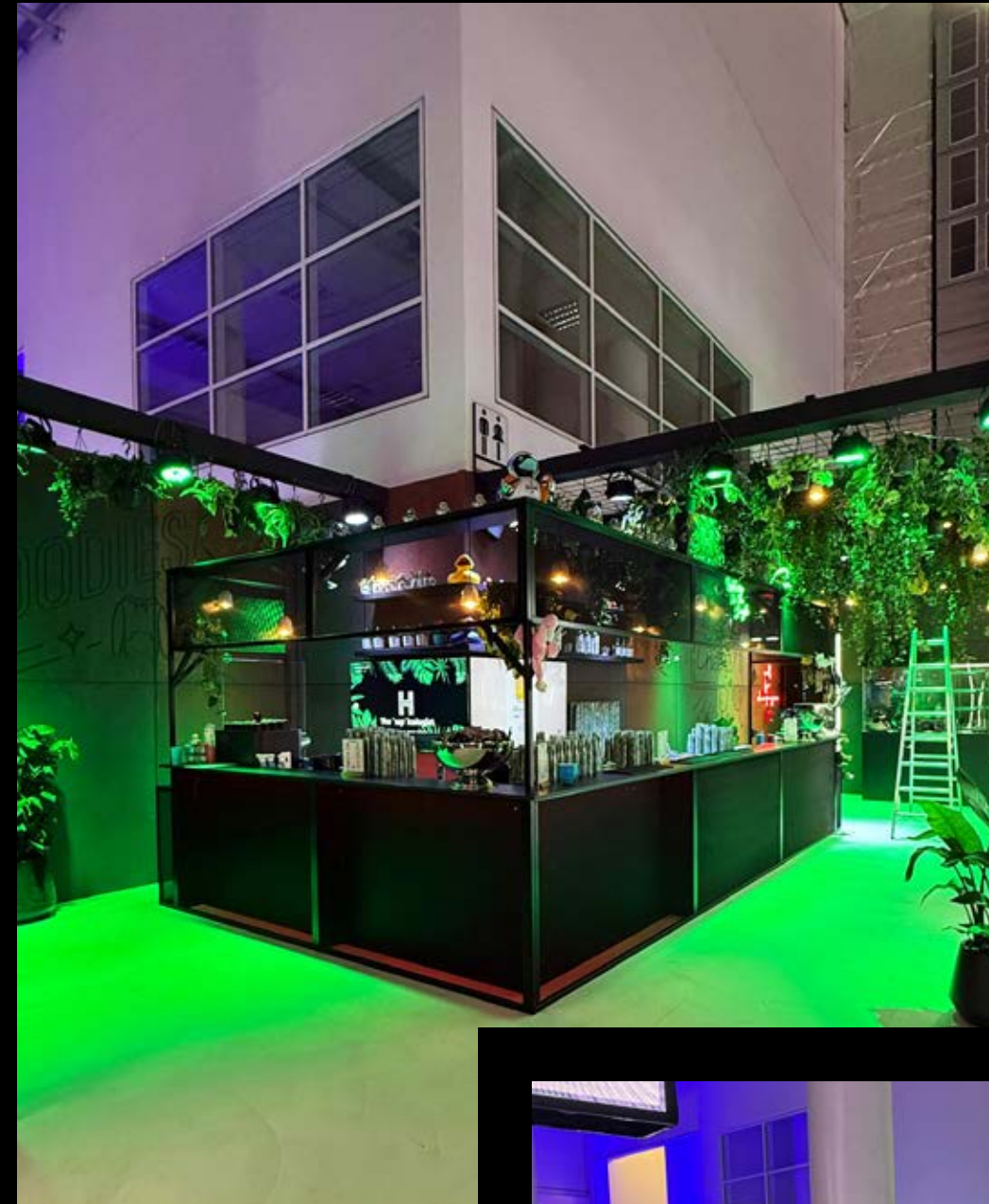




**The hapticologist**

the center of seven senses

**- OMR Hamburg 2025**





HASCO  
Ermöglichen mit System.

HASCO

**HASCO**  
Enabling with System.

Mouldmaking  
starts  
with HASCO.

Formenbau  
beginnt  
mit HASCO.

HASCO

**HASCO**  
Ermöglichen mit System.

AHP MERKLE  
SEWST





- IFAT 2024







HYGIENETECHNIK. WASCHANLAGEN. PROZESSTECHNIK.

DIE WELT DER HYGIENETECHNIK.

MOHN  
WELTMARKTFÜHRER  
FÜR PERSONAL-HYGIENESYSTEME



MOHN







# VAHLE

# VAHLE

## MATERIAL FLOW

EFFICIENT AND RELIABLE  
ENERGY TRANSMISSION



VAHLE

FLEXIBLE CUSTOMER  
NEW VCSX CONTROL  
SYSTEM FOR YOUR  
INTRALOGISTICS

VAHLE

SMART COLLECTOR  
PRODUCT OF THE  
YEAR 2023

## PREDICTIVE MAINTENANCE

MINIMIZE DOWNTIME,  
MAXIMIZE EFFICIENCY



THE END

# WE **NEED** TO TALK.

[www.rocDesign.de](http://www.rocDesign.de)

Copyright  
the contents of this presentation(ideas, images, text, graphics, etc.) and the presentation itself are copyrighted and property of rocDESIGN. Disclosure, modification, publication, transmission or reproduction of the presentation, in your items is permitted only with written permission from rocDESIGN.



MESSEBAU **roc**  
**Design.**